

■ Service Coverage  
■ Dakewe Headquarter



## Superior Quality . Excellent Service

We have a comprehensive customer service system and have established service organizations on different continents. If any problems or technical support are required, Dakewe will provide service, in accordance with the customer, in a timely manner.



**Sanova**  
 Advancing health  
**Sanova Pharma GesmbH**  
 Haidestraße 4, A-1110 Wien  
 Spitzermühlestraße 6, A-4713 Gallspach  
 Tel.: +43 1 801 04 25 60  
 Techn. Service: +43 1 801 04 25 87  
[medicalsistemas@sanova.at](mailto:medicalsistemas@sanova.at)  
<http://medicalsistemas.sanova.at>



 **DAKEWE**  
 Dakewe Medical  
 Shenzhen, China  
[www.dakewemedical.com](http://www.dakewemedical.com)

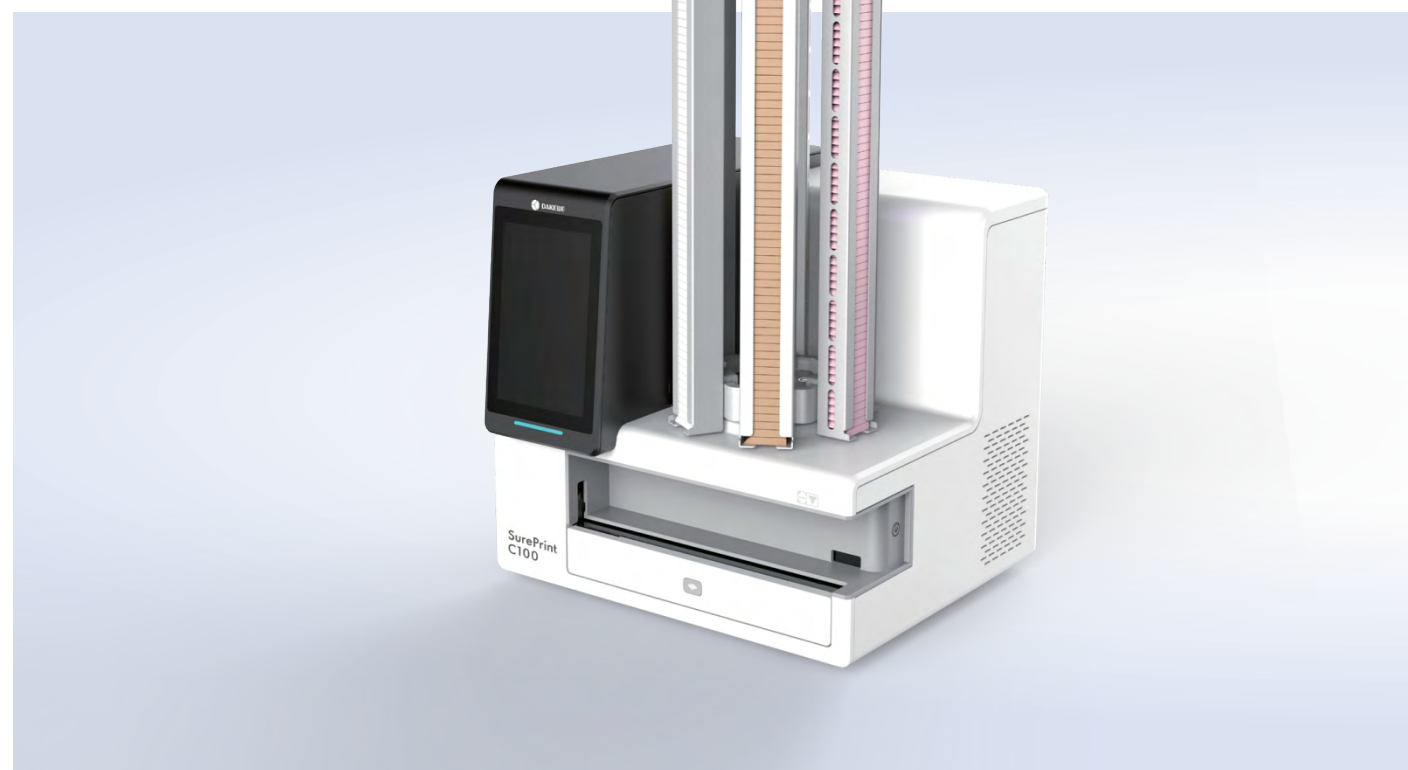
V1.6 2021-10-29 DAKWE C100



## Cassette Printer | SurePrint C100

### Intelligent Laser Cassette Printer

- Smooth
- High Throughput
- Compact
- Flexible



## PRODUCT FEATURES

The compact body provides more free space for your desktop; the intelligent voice recognition and RGB colours identification system provide you with a brand-new numbering experience.



## Intelligent Laser Cassettes Printer PRODUCT

### SurePrint C100

Using innovative non-contact laser marking technology, the SurePrint C100 has the characteristics of fast printing speed and cost saving solution. The operation is simple and easy to use with high reliability and stability. Using universal cassettes, the printed characters are clear and scratch-resistant, and there is no fading nor falling off after soaking in various solutions. The large-throughput collection tank is compatible with marking requirements in different working environments and the small footprint provides more free space for your lab. Scanning and interactive functions provide a more convenient approach for the technologist.



### Intelligent RGB Colours Identification System

The printer has built-in PATENTED RGB colour identification sensor to auto detect each cassette's colour.

This PATENTED unique feature eases the operations during cassettes replacement and eliminate the wrong cassette's colour placement.



### Smart Software

Including the seamless LIS/HIS/PIS/PACS system connection ability, the built-in software can edit the printing template according to customer requirements and supports multiple format printing; It can flexibly switch batch mode and print single cassettes mode on demand.

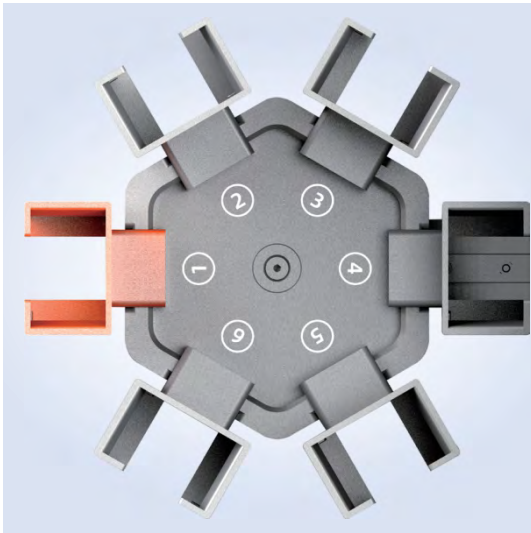


### Environmental Safety and Health

The built-in air purification system can effectively filter the dust generated after printing to protect human health and environmental safety.

# Intelligent Laser Cassettes Printer

SurePrint C100



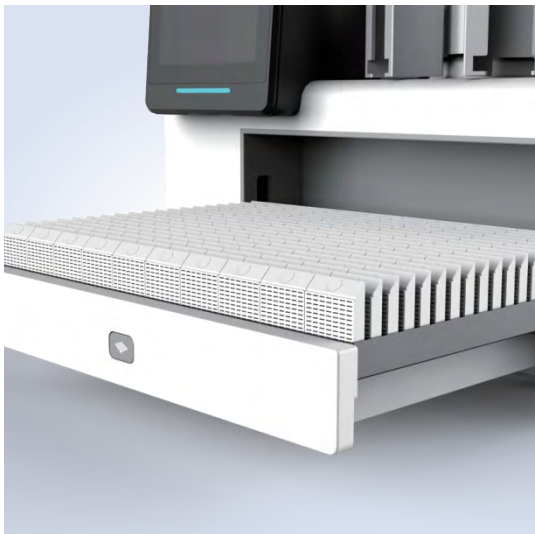
## High Efficiency, High Throughput and Stability

The device equip with 6 metal troughs that capacity range from 450 to 600 cassettes. with a continuous Fastest printing speed can be up to 2.5 sec/cassette(depending on print content)and the exit station can hold up to 100 cassettes at a time. The SurePrint C100 can accommodate all volumes of laboratory workloads.



## Clear Printing and Strong Compatibility

The SurePrint C100 printing resolution is high and can print various fonts, font sizes, special symbols of various texts, along with printing QR codes and barcodes. The device can print cassettes with no cover, cassettes conjoined with cover and cassettes split cover, The device is compatible with cassettes of 35° and 45° angle without the need to change the cassettes formula or special laser cassettes.



## Intelligent Humanized Design

The SurePrint C100' s large LED display can be connected to the software system or print without an external software system. Intelligent voice wake-up and interactive voice recognition functions allow ease of use for lab personnel. Multi-color printing is possible because the laser printer intelligently recognizes the color of the cassettes and prints that of the corresponding category.



### SurePrint C100 Technical Parameters

Printing technology	Non-contact laser marking technology
Print content	Numbers, characters, Chinese characters, letter, 1D barcodes,QR codes, patterns
Printing speed	Fastest speed up to 2.5 sec/cassette(depending on print content)
Cassettes type	No cover, conjoined cover, split cover
Cassettes color	Multi-color printing
Print angle	Both 45° and 35°
Filter	Built-in purification system, with carbon and hepa filter
System interface	LIS、HIS、PIS、PACS
Computer-side software compatible system	Windows 7、Windows 10、Linux
Graphical user interfac	20 cm(8 inches) LED display
Supply voltage	100-240VAC, ±10%
Power consumption	210VA
Load quantity	Total 6 slots, standard loading capacity is 450 cassettes, which can be expanded to 600 cassettes.
Output capacity	100 cassettes in sequence
Equipment dimension	420 * 380 * 395 mm
Net weight	Approx. 30 kg
Smart scan	✓
Intelligent color recognition	✓



# Surtrace Embedding Cassettes

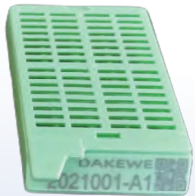
POM material, chemical resistance, high temperature resistance, high stability; available in barrel or tape, making the installation convenient and fast; various colors to meet a variety of customer needs, Avail able in seven colors.



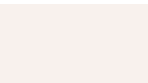
C-0A-00



C-0B-01



C-0B-00



White  
001



Yellow  
002



Green  
003



Red  
004



Blue  
005



Pink  
006



Light Blue  
007

## Pre-loaded in Sleeves

- (1) 75PCS/Sleeve,1500PCS/ Carton
- (2) 75PCS/Sleeve,2550PCS/ Carton
- (3) 90Cassettes/Sleeve+90Lids/InnerBag,1530sets/ Carton

Type	Product Number	Color
(1) C-0A-00	C-0A-00-001-1500	White
(2) C-0A-00	C-0A-00-001-2550	White
(1) C-0B-01	C-0B-01-001-1500	White
(2) C-0B-01	C-0B-01-001-2550	White
(1) C-0B-00	C-0B-00-001-1500	White
(2) C-0B-00	C-0B-00-001-2550	White
(3) C-1-00	C-1-00-001-1530	White
(3) C-1-02	C-1-02-001-1530	White
(3) C-1-01	C-1-01-001-1530	White

# Product Features

Dakewe cassettes have high temperature resistance, chemical resistance, and supports the mainstream laser marking machine in the market. It is clear and complete by forming a mark on the surface of the product by means of laser condensation; it has permanent and indelible characteristics, and is especially suitable for large-scale pathological diagnosis processes. Most demanding experimental requirements. It supports scanning anytime and anywhere, identifying wax blocks conveniently and quickly, and improving work efficiency.



C-1-00



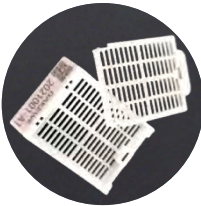
C-1-02



C-1-01



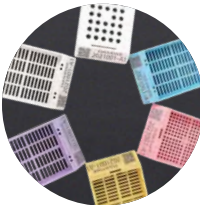
All cassettes are made of POM material, which minimizes the deformation of the wax block due to temperature differences during embedding, freezing and sectioning.



The bottom and cover of the box have a variety of assembly methods designed to meet different usage habits and experimental requirements.



Reasonable printing surface design, suitable for international mainstream cassettes printer.



In order to relieve your visual fatigue in the process of work and facilitate the distinction of different types of samples, products in different colors can be provided according to your needs.