



Sanova
Advancing health



DAKEWE

SurePrint S10/S10Pro
slide printer

Pocket-sized genius

SurePrint S10 slide printer

Incredibility in the tiny body

S stands for... speed, saving, and slim.

Maximized compactness

Got a space for a smart phone? Then there is a place for S10

With 115 × 145 mm minimum distance between feet, S10 can effortlessly save scarce space in laboratories

Minimized consumable cost and maintenance

UV laser marking eliminates the demand for printing consumables such as ribbons, print heads, and ink cartridges, and hence the relevant maintenance

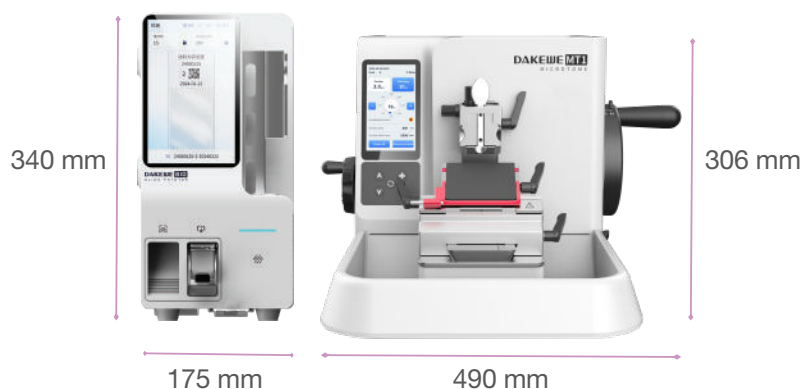
Mellow user experiences

Optimized user interface in simple/advance mode suitable for both geeks and pragmatists

Operate directly on the touch screen as a standalone printer, or connect it to a computer or various LIS

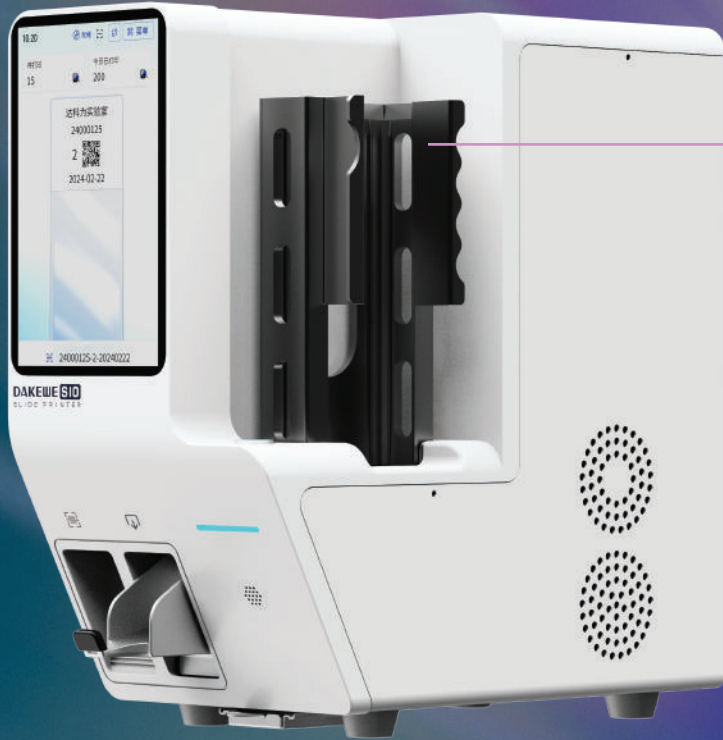
Multi-to-one control:
Integrate S10 to your intranet to receive print requests from multiple computers for optimized equipment utilization

Relative size compared to Dakewe MT1 microtome

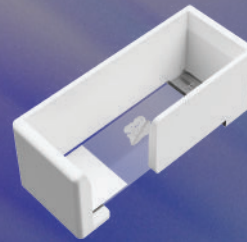


The pocket-sized genius

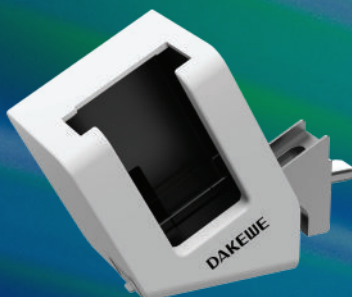
Dakewe SurePrint S10/S10Pro slide printer



Easy loading
150 slides capacity
Insert-n-print slides with tissues
using dedicated on-demand loading
hopper



Built-in scanner facilitates lean workflow
On-demand output can be upgraded to
batch output with extension (only S10Pro)



Specifications

| | S10 | S10Pro |
|-------------------|--|--------------------|
| Print technology | Non-contact UV laser marking technology | |
| Print content | Numbers, characters in multiple languages, symbols, 1D/2D barcodes | |
| Print speed | Up to 2 sec/slide, depending on print content | |
| Print resolution | 2500 dpi | |
| Slide dimensions | (74.8 - 76.0) * (24.8 - 26.0) * (0.8 - 1.2) mm | |
| Load capacity | Up to 150 slides in 1 hopper | |
| Output | Up to 10 slides | Up to 50 slides |
| Built-in scanner | Yes | Yes |
| Air purification | Built-in air purification system | |
| System interface | LIS, HIS, PIC, PACS | |
| Operating systems | Windows 7, Windows 10, Windows 11, Linux | |
| Power | 100 - 240 VAC, 50/60 Hz, 170 VA | |
| Dimensions | 175 × 335 × 340 mm | 175 × 440 × 340 mm |
| Weight | Approx. 13.5 kg | Approx. 15 kg |



Sanova

Advancing health

Sanova Pharma GesmbH

Haidestraße 4, A-1110 Wien
Spitzermühlestraße 6, A-4713 Gallspach

Tel.: +43 1 801 04 28 01

Techn. Service: +43 1 801 04 25 87

medicalsistemas@sanova.at

<https://medicalsistemas.sanova.at>

