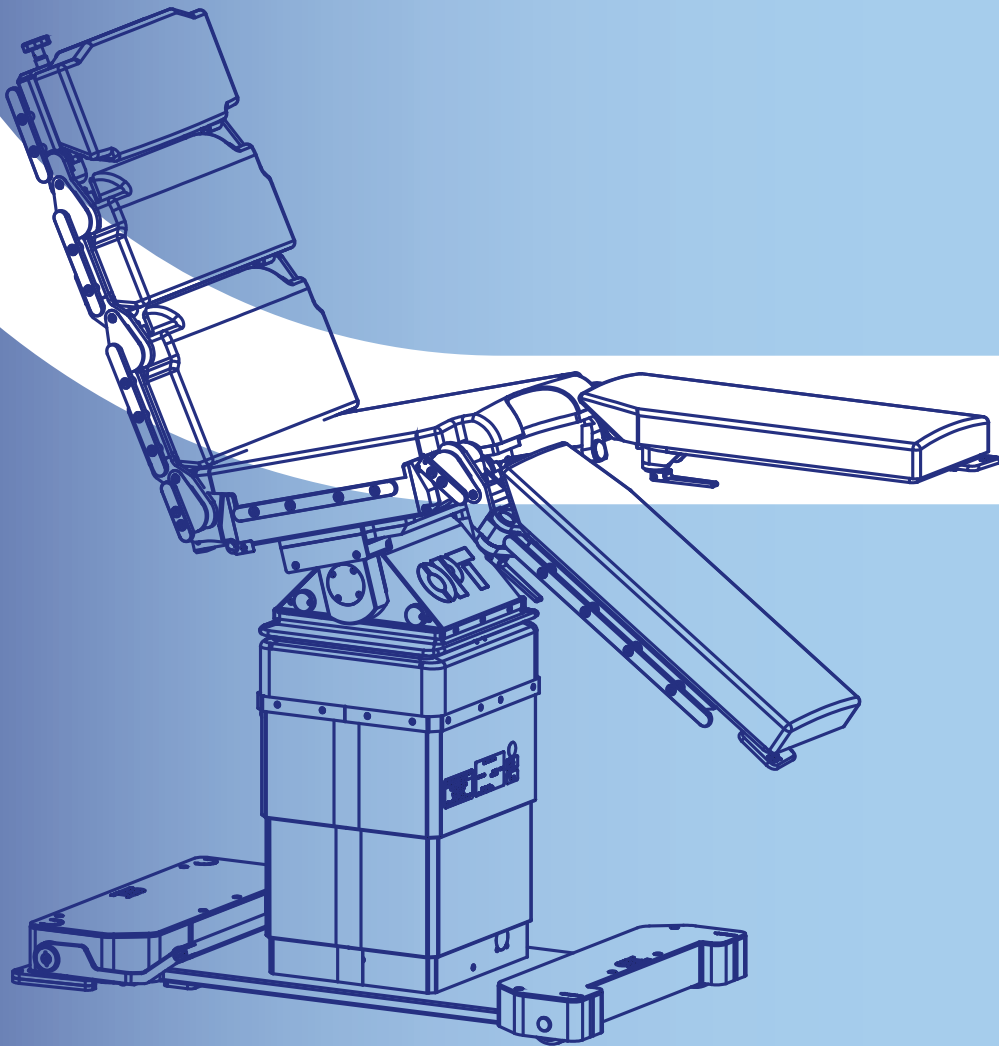


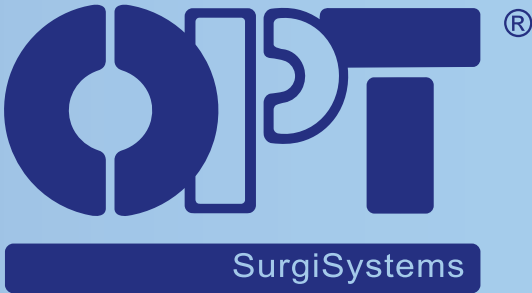
# *vanto II*

## *Wheels*

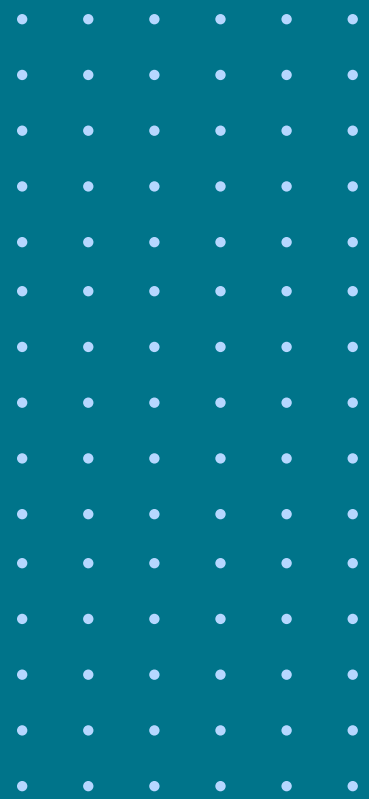


**Mobile operating table**









「Dedicated to  
who takes  
care of us」





# Our company

## OPT SurgiSystems

It's an Italian company that has been producing **operating tables and accessories** for operating theaters around the world since 1919.

The great experience gained in this field in the course of **more than 100 years** leads to the creation of medical devices suitable to best meet the demands of healthcare professionals. Moreover, the constant and close collaboration with our customers allows us to create innovative products, tailored for each new clinical need.

The **attention dedicated to details** represents for us the difference, and constitutes an essential part of the success of the solutions proposed by OPT.

## Reference regulations

- Regulation (EU) no. 2017/745 (MDR)
- EU declaration of conformity



COMPANY WITH  
QUALITY SYSTEM  
CERTIFIED BY DNV  
ISO 13485

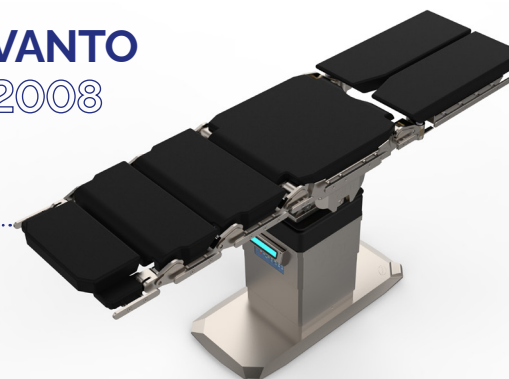
COMPANY WITH  
QUALITY SYSTEM  
CERTIFIED BY DNV  
ISO 9001

COMPANY WITH  
ENVIRONMENTAL SYSTEM  
CERTIFIED BY DNV  
ISO 14001

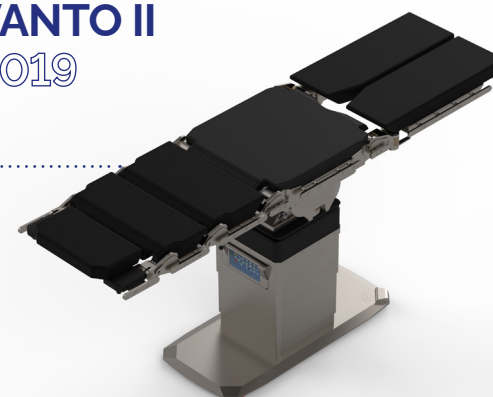


# The new wheeled operating table

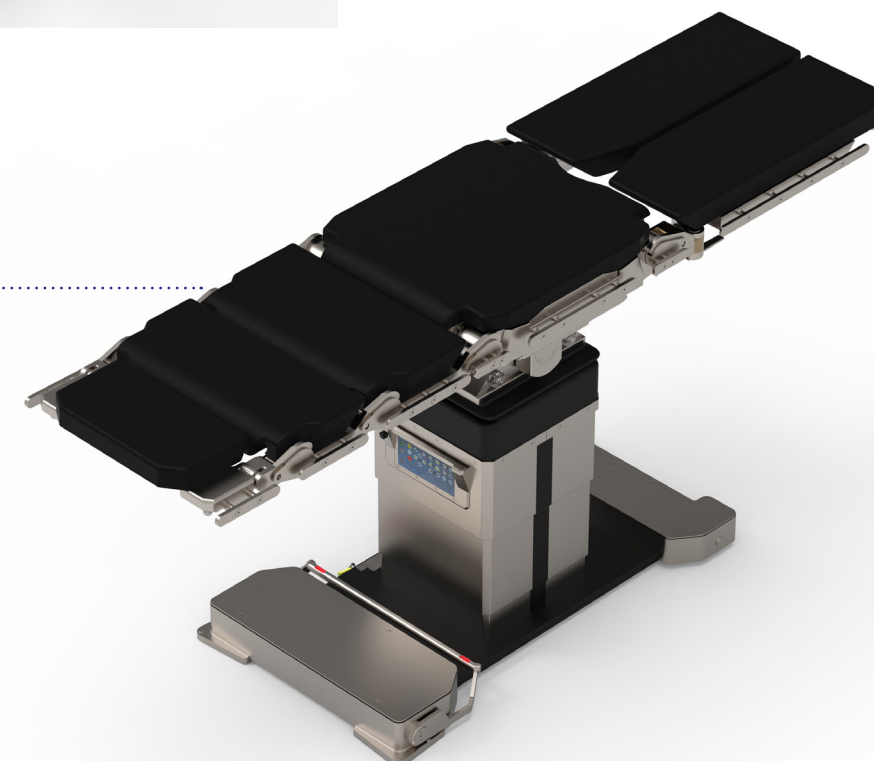
**VANTO**  
2008



**VANTO II**  
2019



**VANTO II**  
*Wheels*  
2021



**VANTO II Wheels** establishes a new dimension in the concept of operating tables with fixed tabletops!

The innovative proposal introduced by OPT aims at making the high technology and reliability of its flagship product available to all the operating theaters. In fact, the idea of the new **VANTO II Wheels** derives from the evolution of the VANTO II operating system, which represents nowadays the reference point in the market of operating tables with transferable tabletops.

Therefore, here is the suitable solution for those who would like to better manage the various surgical disciplines, using a table with fixed tabletops but benefitting from the same levels of technology and performance of the operating systems with transferable surfaces.

**MADE IN ITALY**





# Create your own table!

Choose:

1. Base

2. Tabletop

3. Column

4. Control system

Each table can be customized according to your preferences by quickly choosing each component according to the needs of the operating room, and of the surgical specialties for which it will be used.

Start the configuration and discover all the possibilities on the next pages.

## 1. Base

The range of bases has been developed maintaining an **ultra-flat design**, ensuring the **smallest footprint** for operators and other devices used during operations, as well as allowing an **excellent mobility** during the transport phases.

The **VANTO II Wheels** line in fact, has thinner bases compared to the tables of the same category, and introduces a further novelty: by means of special kits it is in fact possible to update the table handling system even after the purchase.

### Manual movement

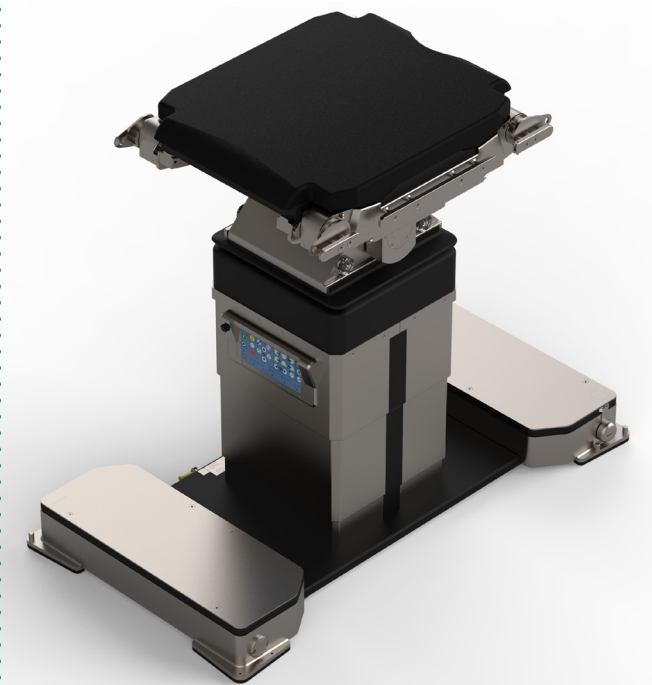
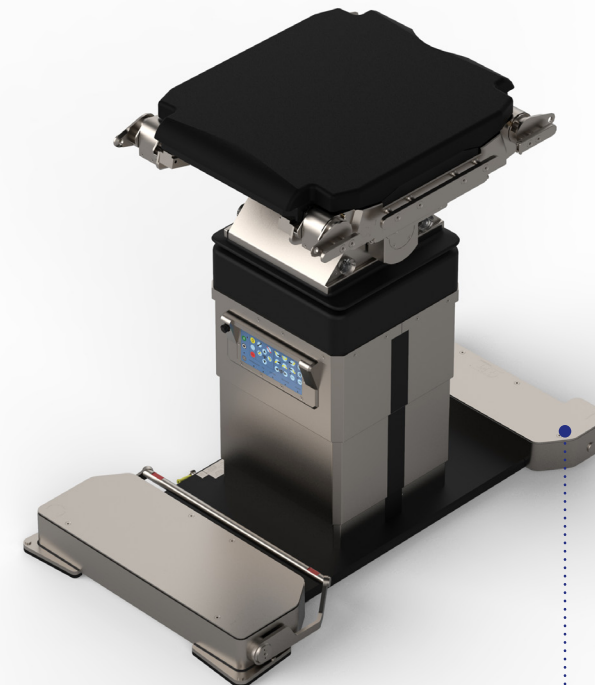
#### Wheels D Standard base

The base is made up of 4 directional and 2 rotating wheels that can be activated by an integrated lever, thanks to which it is always possible to switch from the stable position on feet to the handling on wheels, even in emergency situations.

### Electric movement

#### Wheels e4 Double motorization

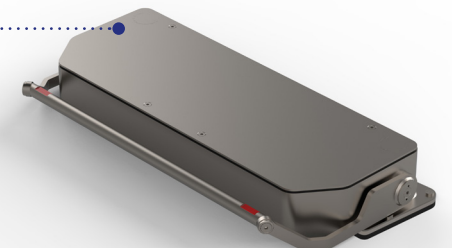
Base version with electromechanical activation of the wheels for moving the operating table. Moreover, an emergency system is always integrated in the base to manually pass from the fixed position on the floor to the mobile one on wheels, and vice versa.



### + Alternative option

#### Wheels 4 Double lever kit

With the same features of the standard base, OPT offers a version that allows to activate also the 4 directional wheels by means of a second integrated lever.

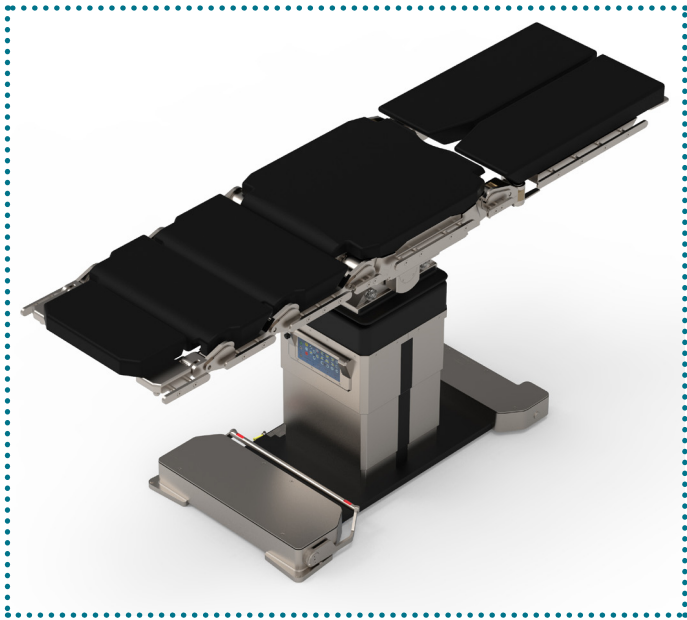


## 2. Operating tabletop

All the tabletops are designed to ensure the **maximum ease of use** by the operating room staff, ensuring at the same time the **best comfort** for the patient.

The available models are divided into:

- **universal tabletops:** suitable for all the specialties of modern surgery.
- **specialized tabletops:** dedicated to the specific needs of certain disciplines, such as vascular or thoracic surgery.

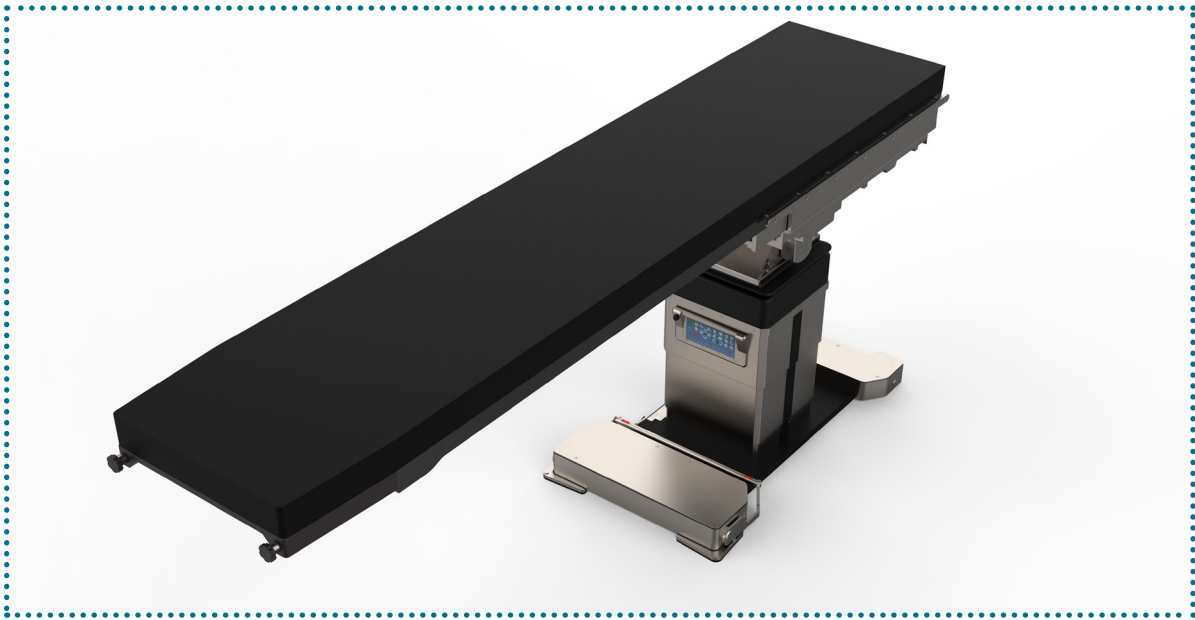


### 7811

Modular tabletop for general surgery, radiolucent for its entire length, which combined with the wide range of available accessories can be easily adapted to the different surgical needs.

### 7812

With the same general features of the tabletop code 7811, the 7812 further allows to perform the isocentric movement, ensuring thus superior performances.

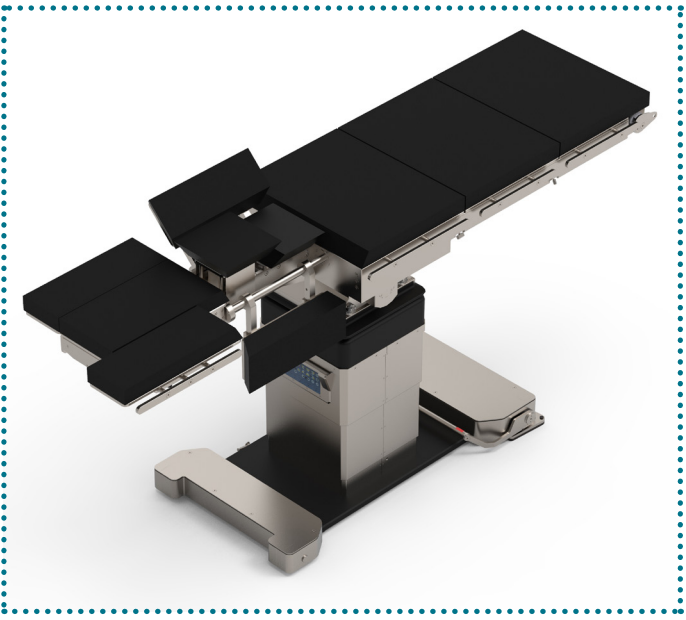
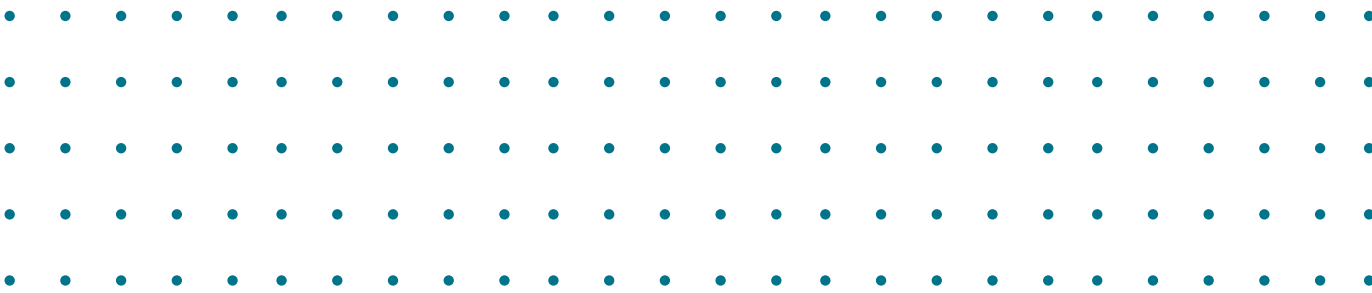


### 7830

Besides allowing a large longitudinal translation movement, this operating tabletop is entirely made of carbon fiber that guarantees a 360° radiolucency (usually required in vascular and hemodynamic surgery, and in diagnostic imaging).

### 7833

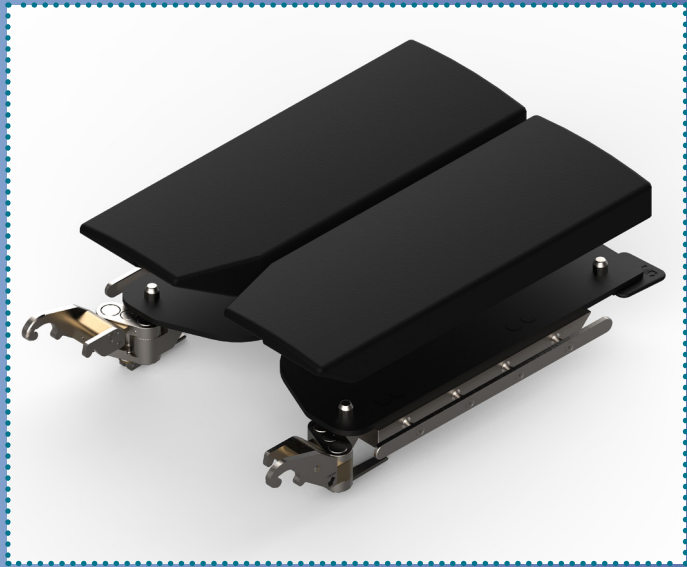
With the same general features as the 7830, the tabletop code 7833 further allows the longitudinal and lateral translation movements to be carried out simultaneously.



### 7897

Tabletop specifically designed for the needs of the thoracic surgery: it ensures greater ergonomics for the surgeon, and offers a better patient immobilization, in addition to guaranteeing a quick and safe positioning in lateral decubitus.

## Cushions



Thanks to a **PIN system** the cushions placing and removal from the sections of the operating tabletop becomes practical: it guarantees an easy and intuitive replacement, allowing at the same time to carry out a complete and rapid disinfection.

According to the needs of the surgical speciality you can choose between foamed cushions or cushions made of viscoelastic foam (also called PUR).

**S** = foamed

**V** = viscoelastic



## 3. Column with integrated control panel



### Standard version

The presence of the same remote control keys also on the integrated panel control allows the operator to better manage the movements of the table and of the column, besides having their status under control thanks to the integrated LEDs.

- it is possible to ask for the column version with 2 connectors
- it is possible to integrate the EVO Kit

**Safety:** The integrated panel control can be used to replace the remote control in the event of faults.



### Top version

With all the features of the standard version, the top one includes a **touch screen display** by means of which it is possible to manage the settings of the operating table, the anti-collision of the outer casing metal sheets, and the speed adjustment of the movements.

- it is possible to ask for the column version with 2 connectors

## 4. Control system



### Wireless remote control

The remote controls, equipped with a touch screen display, allow operators to obtain all the information related to the table in a clear and intuitive way, besides permitting to customize the device settings at any time.

Through the pairing of the remote control with the column it is then possible to know in real time the position of the table, its status of charge and the one of the remote control itself, in addition to the configuration of the operating tabletop, and the angle of the applied sections.

Furthermore, it is always guaranteed the possibility of accessing the settings, saving the most used positions, managing the anti-collision or the connection to the integrated room.

**Safety:** all the remote controls, including the integrated panel control, have the "STOP" emergency button to instantly halt any movement.



### Wired remote control

## + Additional options

### Emergency systems



### MPC/Emergency system

The MPC control system is the exclusive accessory capable of supplying external energy, permitting the staff to manage all the table movements even in emergency cases.

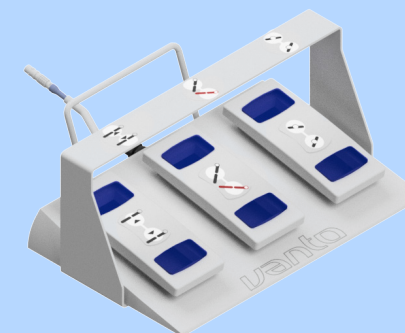
Once connected to the column or to the tabletop it actually permits to complete the surgical activity even in the event of a power failure or faults of the electronic part.



### EPS

The EPS system is the emergency device capable of providing external electrical power to the operating system in the event of discharged accumulators and faulty power supply.

### Footswitch



Floor control system with 3 pedals that allow to perform 3 different electromechanical movements of your choice.

# Standard features



## Automatic recognition of sections and tabletop orientation

The patient's orientation (head side / leg side) and the presence of the installed peripherals (leg section, head section, specialized and extension plates) are automatically identified thanks to the special sensors applied on the central tabletop.



## 360 ° anti-collision:

Thanks to the recognition of the accessories applied to the operating table, the software present in the new **VANTO II Wheels**, together with the anti-collision system, constrains the movements in order to prevent impacts against the floor and the table itself.

It is also possible to activate the anti-collision function in smart mode to maintain the desired position.



## Fully electromechanical

The table is equipped with highly reliable brushless motors each of which controls a single movement, offering the operator the possibility of performing combined and synchronous movements.



## Fix Torque hooking system

All the sections are equipped with the "Fix Torque" hooking system which allows, with a single movement, to add or remove sections from the operating tabletop in a quick, safe and easy-to-sanitize way.



## Complete modularity

The central section of the table, with its 4 independent motors and the additional modules with Fix Torque hooking system, allows a complete configuration and customization modularity in order to satisfy the correct patient's positioning in the various surgical specialties.



## "Sanità 4.0"

The table **VANTO II Wheels** has the required certification as 4.0 capital good, necessary to obtain the "Sanità 4.0" benefits.



## Integration with the operating room

Thanks to communication protocols that comply with the strictest regulatory standards, the **VANTO II Wheels** can be integrated with the major control systems for the Integrated Operating Room.

# Configuration examples

Position for bariatric surgery

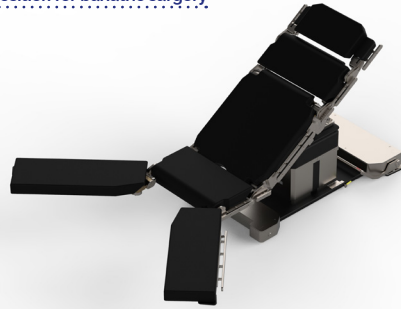
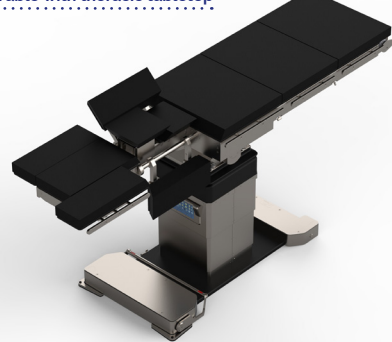


Table with thoracic tabletop



Beach chair position

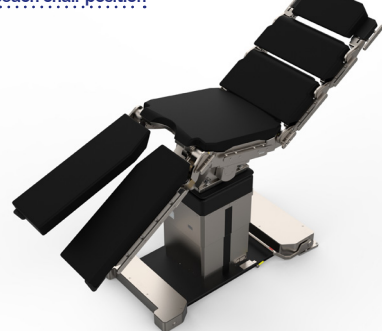


Table with traction system

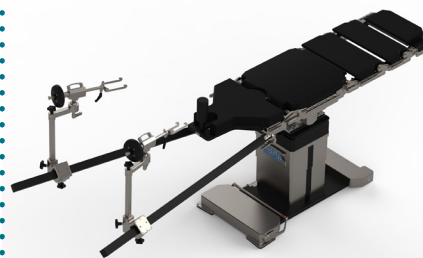
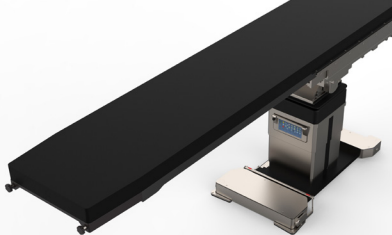


Table with vascular tabletop



Use with mobile "C" arm



# Technical data

Performance and dimensional data	Available tabletops				
	7811-000-xx	7812-000-xx	7830-000-xx	7833-000-xx	7897-000-xx
Minimum height	652 mm	607 mm	687 mm	727 mm	662 mm
Maximum height	1177 mm	1157 mm	1212 mm	1217 mm	1187 mm
Trendelenburg/Reverse-trendelenburg	± 45°	±56°	± 45°	± 45°	± 45°
Bilateral tilt	± 35°	± 35°	± 35°	± 35°	± 35°
Lower backrest adjustment	+90°/-50°	+90°/-50°	-	-	Side position "wings" adjustment ±90°
Thorax flex	+90°/-50°	+90°/-50°	-	-	100 mm
Kidney flex	+90°/-50°	+90°/-50°	-	-	-
Leg section adjustment	± 90°	± 90°	-	-	-
Tabletop translation	400 mm	475 mm	700 mm	700 mm ± 105 mm	-
Radiolucent area	AP: 2142 mm	AP: 2142 mm	AP: 1540 mm 360°: 1380 mm	AP: 1540 mm 360°: 1380 mm	AP: 840 mm
Tabletop size	2142x590 mm	2142x590 mm	2370x550 mm	2370x550 mm	2106x590 mm
Load capacity	453 Kg	453 Kg	250 Kg	250 Kg	270 Kg

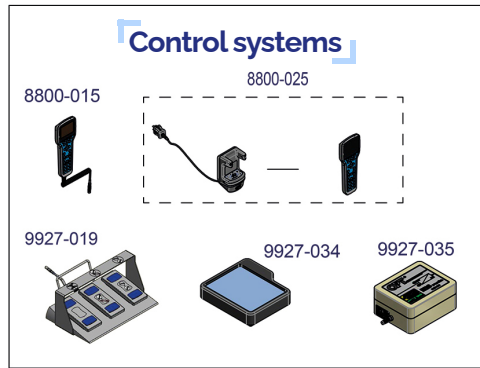
Manual handling					
Head section angle	-90°/+53°	-90°/+53°	-	-	-
Upper backrest adjustment	±90°	±90°	-	-	-

### Movement tolerances:

± 2° on angular movements.

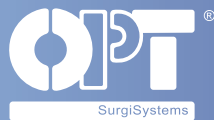
± 3% on linear movements.











**OPT SurgiSystems S.r.l.**  
TKB Group, Tokyo, Japan

Via Cesare Battisti, 17 - 38060 Calliano (TN) - Italy  
Phone + 39 0464834336 - Fax + 39 0464 835142  
[www.opt-ita.com](http://www.opt-ita.com)

Distributed by:

