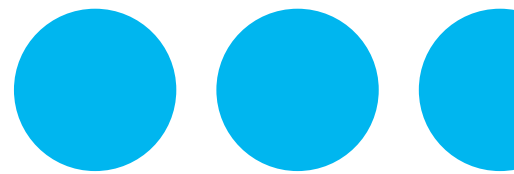


varian

A Siemens Healthineers Company

Cryoablation Urology Solutions

Empower your practice



Countless possibilities.

Make intelligent treatment delivery decisions with confidence with our robust and reliable urology solutions:

CryoCare Touch system. Cryoablation treatment delivery system that fits seamlessly into your existing setup.



Streamlined workflow

- Intuitive features designed to save you time, so you can dedicate more time to your patients' care.
- Cryoprobes are equipped with an integrated temperature sensor for intra-procedural monitoring to protect adjacent structures.



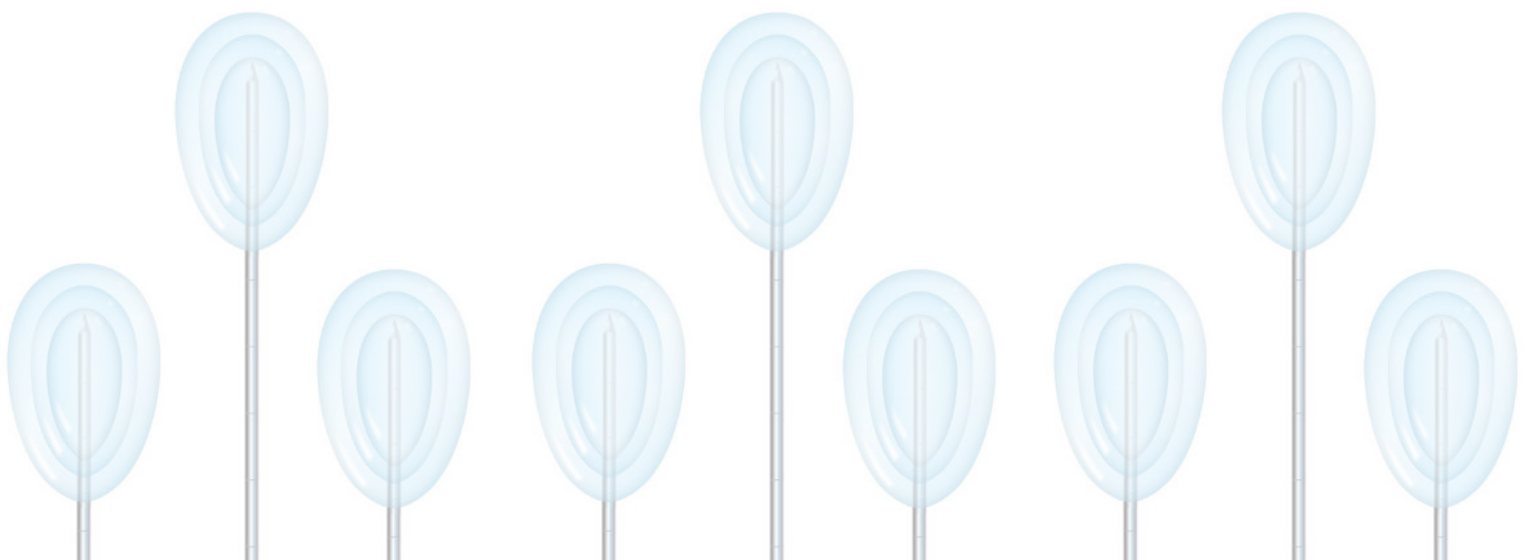
Versatility

- Real-time operation with data points to help you make smarter, more informed decisions.
- Support for percutaneous and laparoscopic techniques.



Robust performance

- Reliable performance for enhanced confidence during clinical procedures.



Powerful V-Probe companion produces an array of "ice-ball" sizes to achieve optimum coverage, delivering cytotoxic temperatures within seconds.

CryoCare Touch System

The CryoCare Touch system is a highly precise ablation treatment system featuring a new intuitive touch screen interface, improved compact design, and software upgrades that offer streamlined therapy delivery with exceptional ease of technical operation.



Touch Screen Monitor

Includes an integrated touch screen user interface to control and monitor the procedure

Real-time Readout

Displays a real-time readout of the argon and helium system pressures during the procedure

Monitor Adjustment

May be tilted and rotated up to 190° for optimal viewing

Remote Control Keypad

Alternative control for operating the CryoCare Touch system

Cart Handles

Handles can be locked in the up position for easy transport

TempProbe Connections

Connect up to eight (A-H), independent TempProbes

Locking Wheels

2 lockable swiveling casters and 2 directional wheels

Cryoprobe Connections

Connect up to eight (1-8), single-use, disposable cryoprobes

Compact Design

Compact, easy-to-operate console

Intuitive workflows

Includes the Assisted Pretest function, which enables automation for a simplified workflow during setup. A simplified user interface enhances usability and procedural independence.

Robust performance

Our newest cryoablation system delivers an elevated end-user experience with quicker response times and procedural feedback for enhanced confidence during clinical procedures.

Cryoprobe Controls

Range (1-8)

Time Indicator

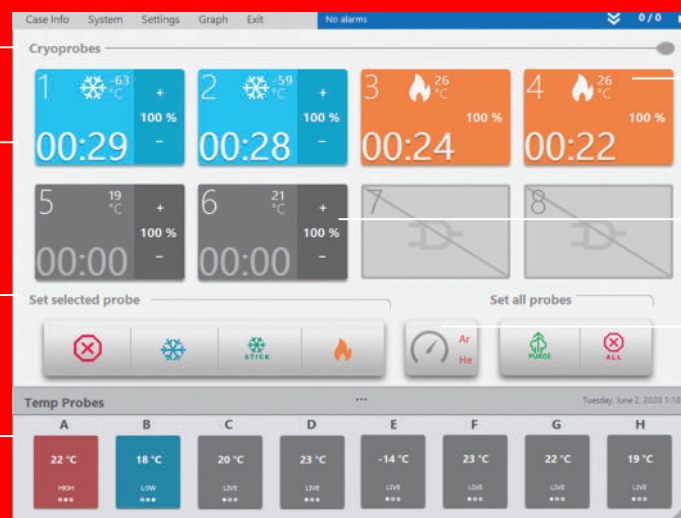
Displays current elapsed time of each cryoprobe state

Cryoprobe Controls

Change the operating mode for each probe individually or for all probes

TempProbe Controls

Real-time TempProbe measurements (°C)



Cryoprobe Temperature

Monitor probe performance in real-time with cryoprobe temperature readings (°C)

Power Level

Can be increased or decreased in 5% increments

Pressure Indicator

Displays the argon and helium system pressures

TempProbe Device

Alphabetical notation, Range (A-H)

System Specifications

System Size

21"x17"x40", 250 lbs.

Electrical Supply

120/230/240 VAC 50/60 Hz,
4 AMPS

Fuse

T5.0 A H 250V

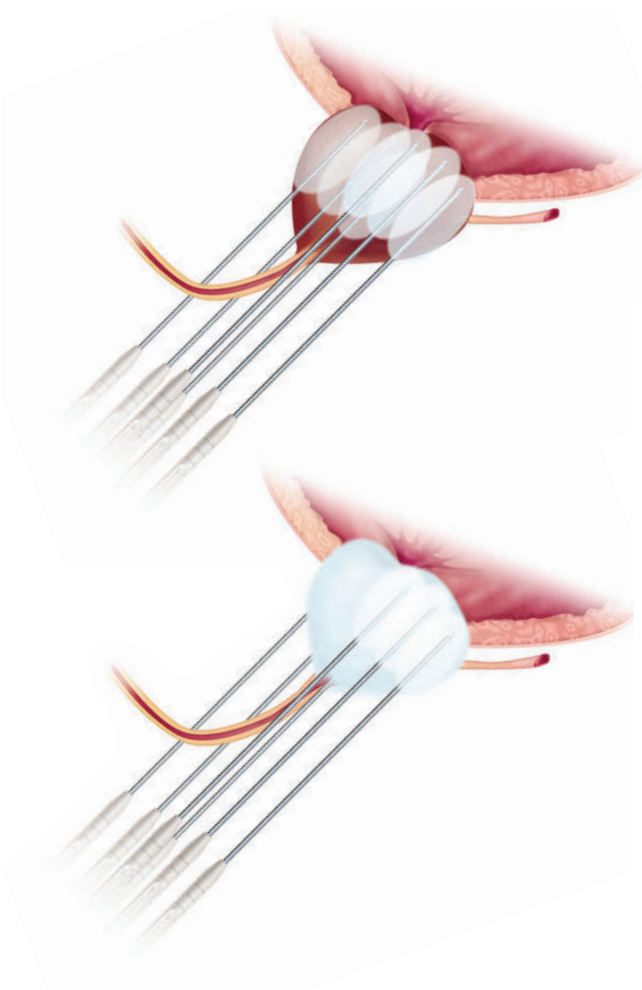
Clinical treatment solutions for..

Prostate cryoablation

- Minimally invasive
- Outpatient procedure
- Can be performed with spinal block¹
- Appropriate for low-, moderate- and high-risk patients²
- Technology improvements provide precise treatment.

Salvage for patients

- Prostate cancer recurs in up to 50% of patients treated with radiation therapy.³
- Minimally invasive treatment option with curative intent for biopsy confirmed radio-recurrent prostate cancer⁴
- Can be used for patients following external beam radiation, brachytherapy, and/or combination radiation¹



Full gland freeze

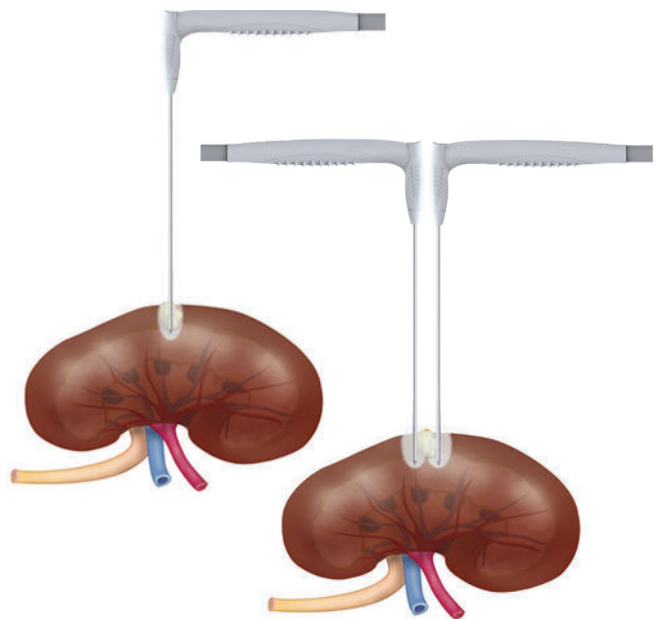
The V-Probe isotherms are adjusted based on the size of the prostate so that only the prostate is encapsulated in lethal ice (<-40°C). An extra safety margin can be created by extending the ice into the soft tissue beyond the prostate capsule.

Renal cryoablation

- Nephron-sparing, minimally invasive treatment^{5,6}
- Ability to treat tumors involving the collecting system
- Disease-specific 10-year survival with percutaneous cryoablation (PCA) was reported to be 94%, similar to surgical interventions; an option for non-surgical candidates, elderly or when co-morbidities are a consideration.^{7,8}
- Viable treatment option for patients who are non-surgical candidates, elderly and/or present comorbidities
- Repeatable treatment option (i.e., larger lesions)
- When allowing for a second ablation, the efficacy and success rates were reported to be similar to surgical intervention.⁹

Percutaneous and laparoscopic renal

- Support for percutaneous and laparoscopic renal procedures
- Allows visualization of ice ball formation beyond tumor margins
- A freeze encapsulates the entire tumor with lethal ice.
- An extra safety margin is created by extending the ice a minimum of 1 cm beyond the tumor.



Cryoprobe compatibility

The CryoCare series is compatible with the complete line of Varian's cryoprobes for both percutaneous and laparoscopic approaches (See product list.).

Powerful Combination

Achieve exceptional visualization and definitive control by pairing CryoCare with the V-Probe variable ice cryoprobe.

Capable of producing an array of "ice-ball" sizes.

Exceptional Visualization¹⁰⁻¹³

Clearly visualize the "ice-ball" on imaging in real time to confirm ablation zones adjacent to vulnerable structures (e.g., spinal column and the bowel) to minimize the risk of thermal injury. Overcome "cold sink" effects particularly, centrally within the kidney.

Definitive Control¹³

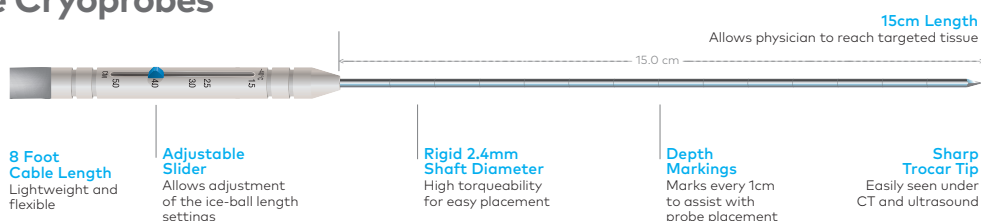
Cytotoxic temperatures are delivered to the tissues within seconds due to rapid, high-pressure argon gas expansion by the Joule-Thomson effect. Varian cryoprobes are each equipped with an integrated temperature sensor to monitor probe performance during the procedure.

Adjustable Isotherms

The Varian V-Probe cryoprobe is capable of producing an array of "ice-ball" sizes. Control the size of the isotherm by moving an adjustable slider with your thumb. Available in straight configurations.

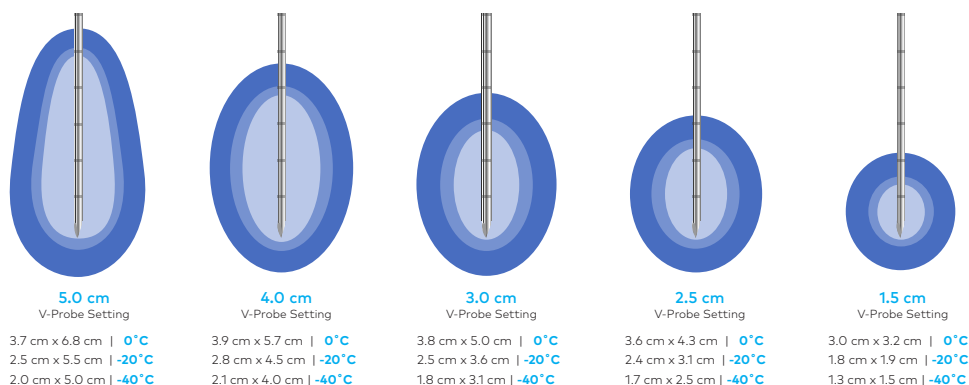
V-Probe Adjustable Cryoprobes

V-Probe cryoprobe offers 5 spherical "ice-ball" settings in a single probe. Available in both a right-angle and straight configuration.



V-Probe cryoprobe offers 5 spherical "ice-ball" settings in a single probe.

NOTE: The isotherms shown represent measurements collected using gelatin formula which approximates performance (± 5 mm) in soft tissue at 100% gas for 10 minutes. The actual isotherm may vary.



V-Probe isotherms

CryoCare System

Catalog Number	Product Description	Quantity
CRYO-38T	CryoCare Touch System: CryoCare Touch	1

V-Probe & V-Probe Kits

Catalog Number	Product Description	Shaft Diameter	Shaft Length	Quantity
CVA2400	2.4 mm V-Probe Cryoprobe	2.4 mm	15 cm	1
CRYO-207-V	Prostate Procedure Probe Pack – variable (6x CVA2400, 6x CRYO-55F, 1x CRYO-77)	2.4 mm	15 cm	1
CRYO-204-V	Prostate Procedure Probe Pack – variable (4x CVA2400, 4x CRYO-55F, 1x CRYO-77)	2.4 mm	15 cm	1

Right Angled V-Probe & Cryoprobes

Catalog Number	Product Description	Shaft Diameter	Shaft Length	Quantity
CVA2400RA	2.4 mm Right Angle V-Probe Cryoprobe	2.4 mm	15 cm	1
PCS-17R	1.7 mm Round Ice PerCryo Cryoprobe	1.7 mm	15 cm	1
PCS-17RS	1.7 mm Round Ice PerCryo Cryoprobe, Short	1.7 mm	7 cm	1
PCS-17	1.7 mm PerCryo Cryoprobe	1.7 mm	15 cm	1
RS-17	1.7 mm Renal Cryo Cryoprobe	1.7 mm	15 cm	1
RS-17L	1.7 mm Long Shaft Renal Cryo Cryoprobe	1.7 mm	23 cm	1
RS-24	2.4 mm Renal Cryo Cryoprobe	2.4 mm	15 cm	1
RS-24L	2.4 mm Long Shaft Renal Cryo Cryoprobe	2.4 mm	23 cm	1
PCS-24	2.4 mm PerCryo Cryoprobe	2.4 mm	15 cm	1
PCS-24L	2.4 mm Long Shaft PerCryo Cryoprobe	2.4 mm	23 cm	1
R3.8	3.8 mm Renal Cryo Cryoprobe	3.8 mm	13 cm	1
R3.8L	3.8 mm Long Shaft Renal Cryo Cryoprobe	3.8 mm	28 cm	1

Straight Cryoprobe

Catalog Number	Product Description	Shaft Diameter	Shaft Length	Quantity
CRYO-48-F	8.0 mm Cryoprobe	8 mm	29 cm	1

Temperature Probes & Other

Catalog Number	Product Description	Shaft Diameter	Shaft Length	Quantity
CRYO-55-F	TempProbe Device	16-gauge	14.5 cm	1
CRYO-77	Urethral Warming Catheter Kit (Not available in all markets)			1

For a comprehensive list of available cryoprobes, please consult your Varian representative.

To order Varian cryoablation products, please contact Varian's Interventional Solutions Customer support team +1.877.467.2009 or vis.support@varian.com.

Recognized clinical solution

The American Urological Association (AUA) guidelines for cryoablation¹⁴

Prostate cancer

- Clinicians should inform localized prostate cancer patients considering whole gland cryosurgery that cryosurgery has similar progression-free survival as did non-dose escalated external beam radiation (also given with neoadjuvant hormonal therapy) in low- and intermediate-risk disease, but conclusive comparison of cancer mortality is lacking.⁴

Renal masses

- Physicians should consider thermal ablation (radiofrequency ablation or cryoablation) as an alternative approach for the management of cT1a renal masses < 3 cm in size.
- A percutaneous technique is preferred over a surgical approach whenever feasible.

NCCN guidelines⁹⁹

Kidney cancer

- Thermal ablation (e.g., cryosurgery, radiofrequency ablation) is an option for the management of patients with clinical stage T1 renal lesions.
- Thermal ablation is an option for masses <3 cm, but may also be an option for larger masses in select patients.

SIR position statement⁶

Small renal tumors

- In patients with small renal tumors (stage T1a), percutaneous thermal ablation is a safe and effective treatment with fewer complications than nephrectomy and acceptable long-term oncological survival outcomes.
- In high risk patients with T1b RCC who are not surgical candidates, percutaneous thermal ablation may be an appropriate treatment option.

References

1. Cytron S, Greene D, Witzsch U, et al. Cryoablation of the prostate: technical recommendations. *Prostate Cancer Prostatic Dis.* 2009;12(4):339-46.
2. Rodríguez SA, Arias Fúnez F, Bueno Bravo C, et al. Cryotherapy for primary treatment of prostate cancer: intermediate term results of a prospective study from a single institution. *Prostate Cancer.* 2014;2014:571576.
3. Eandi JA, et al. Robotic Assisted Laparoscopic Salvage Prostatectomy for Radiation Resistant Prostate Cancer. *J Urology.* 2010; 183:133-7.
4. Babaian RJ, et al. Best practice statement on cryosurgery for the treatment of localized prostate cancer. *J Urol.* 2008 Nov;180(5):1993-2004.
5. Maria T, Georgiades C. Percutaneous Cryoablation for Renal Cell Carcinoma. *J Kidney Cancer VHL.* 2015;2(3):105-113.
6. Morris CS, Baerlocher MO, Dariushnia SR, et al. Society of Interventional Radiology Position Statement on the Role of Percutaneous Ablation in Renal Cell Carcinoma Endorsed by the Canadian Association for Interventional Radiology and the Society of Interventional Oncology. *J Vasc Interv Radiol.* 2020; 31(2):189-194. e3.
7. Bhagavatula SK, et al. Percutaneous CT- and MRI-guided Cryoablation of cT1 Renal Cell Carcinoma: Intermediate- to Long-term Outcomes in 307 Patients. *Radiology.* 2020 Sep;296(3):687-695.
8. Morkos J, et al. Percutaneous Cryoablation for Stage 1 Renal Cell Carcinoma: Outcomes from a 10-year Prospective Study and Comparison with Matched Cohorts from the National Cancer Database. *Radiology.* 2020.
9. Version 3.2022 National Comprehensive Cancer Network NCCN Clinical Practice Guidelines in Oncology Kidney Cancer
10. Zhong J, Wah TM. Renal ablation: current management strategies and controversies. *Chin Clin Oncol.* 2019;8(6):63.
11. Filippiadis D, Mauri G, Marra P, Charalampopoulos G, Gennaro N, De cobelli F. Percutaneous ablation techniques for renal cell carcinoma: current status and future trends. *Int J Hyperthermia.* 2019;36(2):21-30.
12. Krokidis ME, Kitrou P, Spiliopoulos S, Karnabatidis D, Katsanos K. Image-guided minimally invasive treatment for small renal cell carcinoma. *Insights Imaging.* 2018;9(3):385-390.
13. Park SY, Won JY, Oh YT, Jung DC, Kim GM, Kim MD. Assessment of cold sink effect in postulated renal cryoablation by analyzing radiographic ice ball on computed tomography. *Br J Radiol.* 2018;20170951.
14. The American Urological Association guidelines. www.auanet.org/guidelines.

Intended Use Summary

The CryoCare Touch system is intended for use in open, minimally invasive or endoscopic surgical procedures in the areas of general surgery, urology, gynecology, oncology, neurology, dermatology, ENT, proctology, pulmonary surgery and thoracic surgery. The system is designed to freeze/ablate tissue by the application of extreme cold temperatures including prostate and kidney tissue, liver metastases, tumors, skin lesions, and warts.

Safety

As with all surgical procedures, the possibility of adverse reactions such as pain, fever, chills, sepsis, edema, perforation, ulceration, and hemorrhage may occur. For more information, please visit www.varian.com/safety.

CAUTION: Federal (USA) law restricts this device to sale by or on the order of a physician.

Indications, contraindications, warnings, and instructions for use can be found in the product labeling supplied with each device.

varian

A Siemens Healthineers Company

varian.com/is

USA, Corporate
Headquarters

USA, Varian's Interventional
Solutions Business Headquarters

Legal
Manufacturer

Varian Medical Systems
Palo Alto, CA 94304
Tel: 650.424.5700
800.544.4636

Varian Medical Systems
Austin, TX
Tel: 877.467.2009

Varian Medical Systems
9825 Spectrum Drive
Building 2, Suite 275
Austin, TX 78717
USA



Authorized Representative
and Importer in the EU



Varian Medical Systems
Nederland B.V.
Kokermolen 2
3994 DH Houten, The Netherlands
customer.relations@varian.com

vis.support@varian.com

Varian Medical Systems as a medical device manufacturer cannot and does not recommend specific treatment approaches. Specifications subject to change without notice. Not all features or products are available in all markets and are subject to change. Consult your Varian representative for country-specific product availability.

© 2023 Varian Medical Systems, Inc. VARIAN, CRYOCARE, PERCRYO, RENAL CRYO, TEMPPROBE and V-PROBE are trademarks of Varian Medical Systems, Inc., pending or registered U.S. Pat. & Tm. Off and other jurisdictions.